

# COMPANY PROFILE



richter & associates  
architects / argitekte

CAPABILITY:

KNOWLEDGE OF, AND EXPERIENCE IN THE INDUSTRY: RICHTER AND ASSOCIATES WAS FOUNDED AS RICHTER WILSENACH & BLOEM IN 1970, AND HAVE BEEN LEADER OF THE INDUSTRY FOR THE LAST 51 YEARS SPECIALIZING IN RESIDENTIAL, COMMERCIAL , MEDICAL AND INDUSTRIAL DESIGN OVER AFRICA, SOUTH AFRICA, AND PARTS OF EUROPE. WE ARE ABLE TO COMBINE TRADITIONAL ARCHITECTURAL SKILLS WITH COMPUTER TECHNOLOGY, TO CREATE A FINAL QUALITY PRODUCT WITH GREAT CUSTOMER SATISFACTION.

INFRASTRUCTURE AND OTHER SUPPORT:

OUR COMPANY IS RUN BY RUPERT RICHTER. WE ALSO HAVE A TEAM OF 8-10 FULL TIME DRAUGHTSMEN & DESIGNERS, WITH SKILLS RANGING FROM ARCHITECTURE, TO GRAPHIC AND INTERIOR DESIGN.



TOURATECH SOUTH AFRICA SHOP



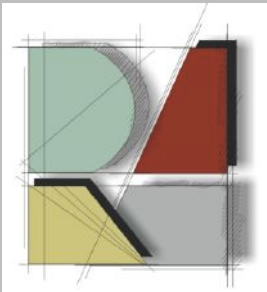
HOUSE VAN WYK STILBAAI



MUCKLENEUK APARTMENTS



BRONBERG HOUSING DEVELOPMENT







CENTRAL APARTMENTS MIDRAND



HOUSE STEYN: WATERKLOOF



MUCKLENEUK HOUSING DEVELOPMENT



HOUSE WATERKLOOF



NORTHGATE HEIGHTS APARTMENTS



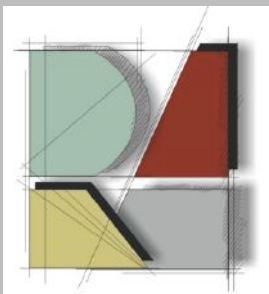
MENLYN RESIDENTIAL



BUFFALO CREEK LODGE

# RESIDENTIAL DESIGN

APARTMENTS  
STUDENT HOUSING  
SHOPPING CENTRES  
OFFICE DESIGN  
LODGES  
HOTELS  
FACTORIES  
MEDICAL FACILITIES  
INCLUDING:  
DOCTORS CONSULTATION  
ROOMS,  
HOSPITALS  
MATERNITY FACILITIES





MT PLEASANT HOSPITAL HARARE



WATERKLOOF BOUTIQUE HOTEL



PROPAGANDA RESTAURANT



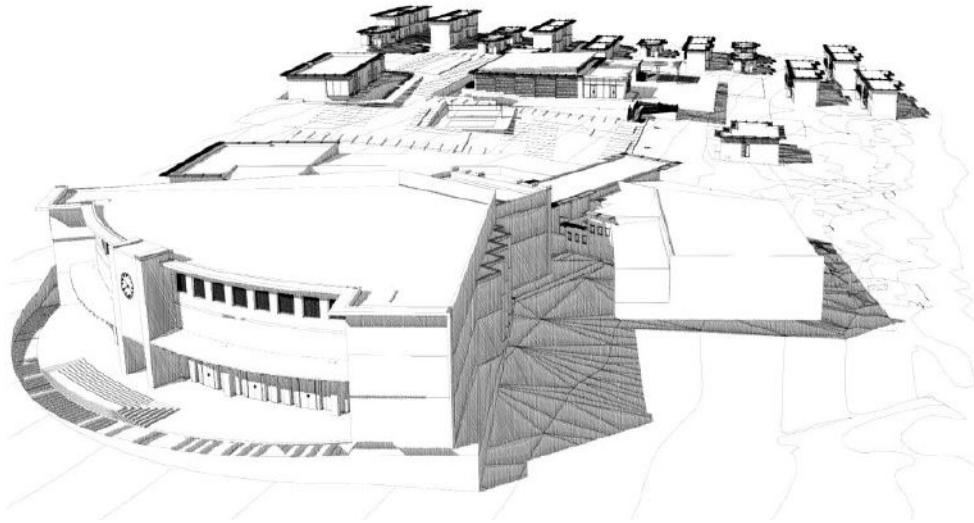
KEMPTON CORNER REVAMP



## COMMERCIAL PROJECTS:

KEMPTON CORNER RESIDENTIAL/RETAIL DEVELOPMENT  
 VBS MUTUAL BANK RENOVATIONS  
 CENTURION ACADEMY STUDENT HOUSING & AUDITORIUM  
 RIVER'S BEND MIXED USE DEVELOPMENT  
 NINA PARK SHOPPING CENTRE ALTERATIONS  
 MORRIS CRANES OFFICE & FACTORIES  
 CENTURION ACADEMY  
 VILLA STERNE GUESTHOUSE  
 KLOPPENHEIM HOTEL & LODGE  
 VILLAGE SPORTIF, (GUJAN MESTRAS RESIDENTIAL DEVELOPMENT FRANCE) BEYCHEVELLE  
 RESIDENTIAL DEVELOPMENT ADDITIONS TO EMBASSY OF PERU ADDITIONS TO EMBASSY OF  
 FINLAND EMBASSY OF NEW ZEALAND  
 CICADA HOLIDAY APARTMENTS RAMSGATE  
 BABCOCK HOTEL & TRAINING FACILITY  
 MIDMED HOSPITAL

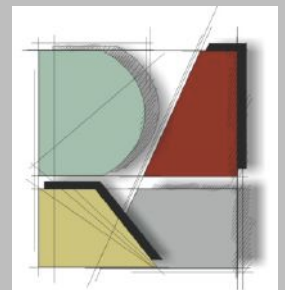
RICHTER AND ASSOCIATES ARCHITECTS ARE ACTIVELY INVOLVED ON MANY PROJECTS ALL OVER SUB-SAHARAN AFRICA. WE ARE EXCITED TO BE ASSOCIATED WITH MAJOR COMPANIES AND WORK WITH SOME OF SOUTH AFRICA'S LARGEST CONSULTANCY FIRMS. PLEASE CONTACT US FOR A LIST OF REFERENCES.



“ARCHITECTURE SHOULD SPEAK OF ITS TIME AND PLACE BUT YEARN FOR TIMELESSNESS” - FRANK GEHRY



#### ASSOCIATES & SUPPORT:





## PROFESSIONAL TEAM:

### **Rupert Richter (Nat Dip Arch) (B-Tech Arch) SACAP, PIA**

Rupert graduated in 2000 from the Tshwane University of Technology with honors, excelling in Design, Architectural History and Project Management. After completing his studies he joined prominent South African architectural firms gaining experience in residential and commercial projects. He joined Anton Richter Architects in 2005 which became Richter and Associates Architects in 2007. Since 2007 Rupert acted as head designer and leader of the architectural team. His expertise and passion for commercial and high density residential design has led to many successful projects. He excels in collaborating with clients, consultants, engineers and contractors to ensure that forecasted designs align with project requirements and construction codes across retail, mixed-use and high-density residential projects. Managing medium to large scale projects in Sub Saharan Africa, Egypt and France. He is a member of SACAP, PIA and a corporate member of SAIA. He served on the PIA committee from 2003-2004.

### **Anton Richter (Nat Dip Arch) SACAP, SAIA, PIA**

Anton Graduated with honours at UP in 1960 where after he worked for Joubert Owens & van Niekerk architects and later Stauch Voster before starting his own firm Richter Wilsenach & Bloem in 1970. In 1987 he started his own practice Richter & Malan, rebranding it to Anton Richter Architects and later Richter and Associates Architects. Anton has vast experience in all areas of architecture and has been involved in over 1200 projects ranging from residential to commercial, industrial and medical developments. He has been viewed as one of the most prominent architects in Pretoria and gained a lot of respect from his peers. He is also a member of SACAP, SAIA and PIA.

### **Michael Allen (B-Tech Arch) (M-tech Arch) SACAP**

Michael is the Director Candidate Architect that joined Richter and Associates in 2019. He completed his B-Tech Architectural Professional Honors Degree in 2016, he then immediately continued to complete his M-Tech Architectural Professional Masters Degree in 2018. He has a keen interest in all facets of design and has gained valuable experience in high density residential, social housing and student accommodation in both the design and technical realms. Despite Michael's young age his portfolio speaks for itself with him having been involved in various commercial, residential and industrial projects throughout his student career. Michael has a calm demeanor and a strong management style enabling him to effectively co-ordinate and facilitate projects from inception to completion. Michael is affiliated with SACAP.



### **Francke Blignaut (N-Dip Arch Tech) SACAP, SAIAT**

Francke graduated in 2000 from the Tshwane University of Technology where a strong foundation of creativity and technical knowledge of Architecture was laid. After completing his studies, Francke gained experience in residential and commercial projects. Francke worked with prominent architects at Arch-Studio, Barry Marais Architects, FdotArch, and more. Since 2000 he dedicated himself to becoming a CAD specialist and technical drawings as well as 3D design together with all aspects of Architecture and construction that formed part of his 20 year career. He enjoys collaborating with clients and professionals ensuring a quality end product. He is a member of SACAP and SAIAT. Francke was invited by Tshwane University of Technology to assist in Architectural software subjects in 2007.



### **Jeannette Dreyer Admin**

Jeannette joined Richter & Associates in 2018 as head of Administration and Personal Assistant to the members. Jeannette has a strong foundation and knowledge regarding the various tasks and duties expected of her, coming from several years of administrative experience. She has developed a suite of efficiency tools to keep company projects well organised and on task. Jeannette is known for taking initiative and embracing challenges.

## **Joint Venture Partners**



### **Adriaan Pretorius RIBA(Inter) ArchSA**

Completed the first two years of the degree course in Architecture at the University of Pretoria, South Africa. Emigrated to London, England and enrolled at the Royal Institute of British Architects where after Adriaan moved to Canada and continued studies. He completed the RIBA Intermediate Level at McGill University, Montreal, Canada, and returned to South Africa to enroll to complete the degree course in Architecture at the University of Pretoria. Adriaan qualified as architect in 1972 and registered with the Institute of South African Architects, and is a member of the South African Council for the Architectural Profession. (SACAP)

Adriaan manages **Archinet Architects** based in Cape Town and is the official JV partner of Richter & Associates Architects in the Cape Province.

**Archinet Architects** has completed projects locally and abroad since 1966. These include low density residential houses, apartments, commercial developments, hotels, lodges and resorts. A full CV can be obtained at: [adriaan@archinetarchitects.co.za](mailto:adriaan@archinetarchitects.co.za)



### **Frederik (Derick) Britz (N-Dip Arch) (B-Tech Arch) ( M-Tech Arch)**

Derick qualified as architect earning his M-Tech degree in 1999 and started his own firm Arch-Visi Architects in 2000 where he gained expertise in residential developments, office parks, retail developments and hotels locally and in Tanzania. He left the firm in 2008 and started Studios Architects where he specialized in Day Clinics, Frail Care and Dementia facilities, Sub Acute and Retirement Villages. He is passionate about design and has received many design awards. Working on many residential estates has given him the opportunity to serve on numerous aesthetical committees. He is member of SAIA, SACAP and PIA.

**Studios Architects** is based in Centurion Pretoria, and is Richter & Associates Architects' JV partner on projects in Gauteng, Free State, Mpumalanga and Limpopo. Contact: [derick@studious.co.za](mailto:derick@studious.co.za) for a full CV.

**REGISTERED NAME & REGISTERED OFFICE:**

RICHTER & ASSOCIATES ARCHITECTS  
100 UMKOMAAS ROAD, ALPHEN PARK  
PRETORIA, 0181

**MEMBERS:**

ANTON RICHTER, RUPERT RICHTER, ANARIE ENGELBRECHT,  
MICHAEL ALLEN

**PLACE OR REGISTRATION:** PRETORIA, GAUTENG

**SACAP REGISTRATION NUMBER:** 692, 0277

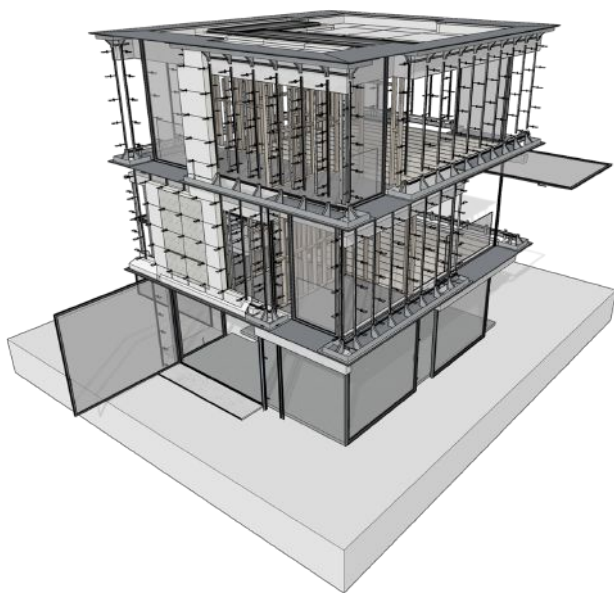
**PIA REGISTRATION NUMBER:** ANTON RICHTER: P10150

RUPERT RICHTER: P10420

**CONTACT INFORMATION:**

TELEPHONE: 012 460 6293

EMAIL : INFO@R-AA.CO.ZA



**richter & associates**  
architects

100 umkomaas road alphen park pretoria 0081 south africa  
po box 1561 brooklyn square 0075  
tel: +27 (12) 4606293

website: [www.r-aa.design](http://www.r-aa.design) email: [info@r-aa.co.za](mailto:info@r-aa.co.za)

